



more  
**Theme Hotels**

Frederik Prinz

**BRAUN**

Architects:  
CorsoStaicoff  
Designers:  
CorsoStaicoff –  
Interior Design;  
Pappas Art - Art  
Curation; Ditreen -  
Graphic Art  
Client:  
Provenance Hotel  
Group (Formerly  
Aspen Hotel Group)  
Completion:  
2008



above:  
Lobby  
below:  
Glass chandelier in lobby  
right:  
Front desk

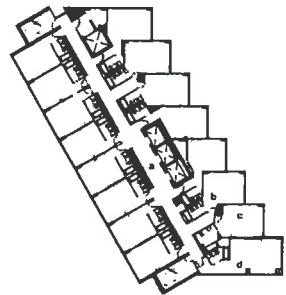
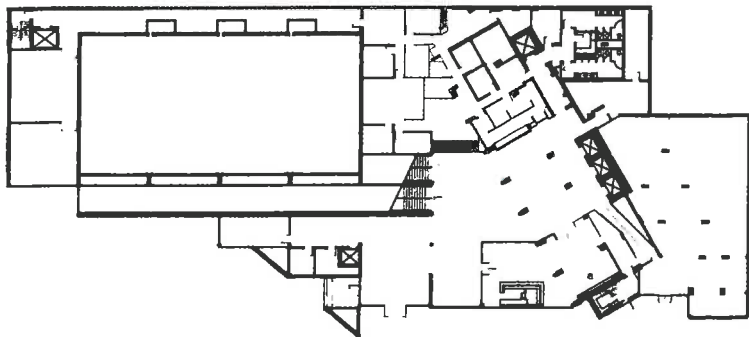
# Tacoma

Having been assigned to renovate this chain hotel and transform it into a sophisti-

## Hotel Murano

cated boutique property, the design team looked to the flourishing local art community for influence. The Chihuly Bridge of Glass, by glass pioneer and Tacoma Native Dale Chihuly, and the Tacoma Glass Museum have been a major factor in distinguishing Tacoma from other cities. In the same manner, the design team wanted to link the hotel to the community using glass as its vehicle. The hotel collection includes established as well as up-and-coming artists from around the world. Art glass is integrated into everything, from the front desk to the entry door pulls. Each of the 21 guest floors is dedicated to an artist, featuring works displayed behind a customized etched glass wall engraved with the artist's commentary.







above left:  
Glass art  
below left:  
Main lobby floor plan and  
typical guestroom floor plan  
above:  
Guest corridor with  
glass art wall  
below:  
Guestroom

