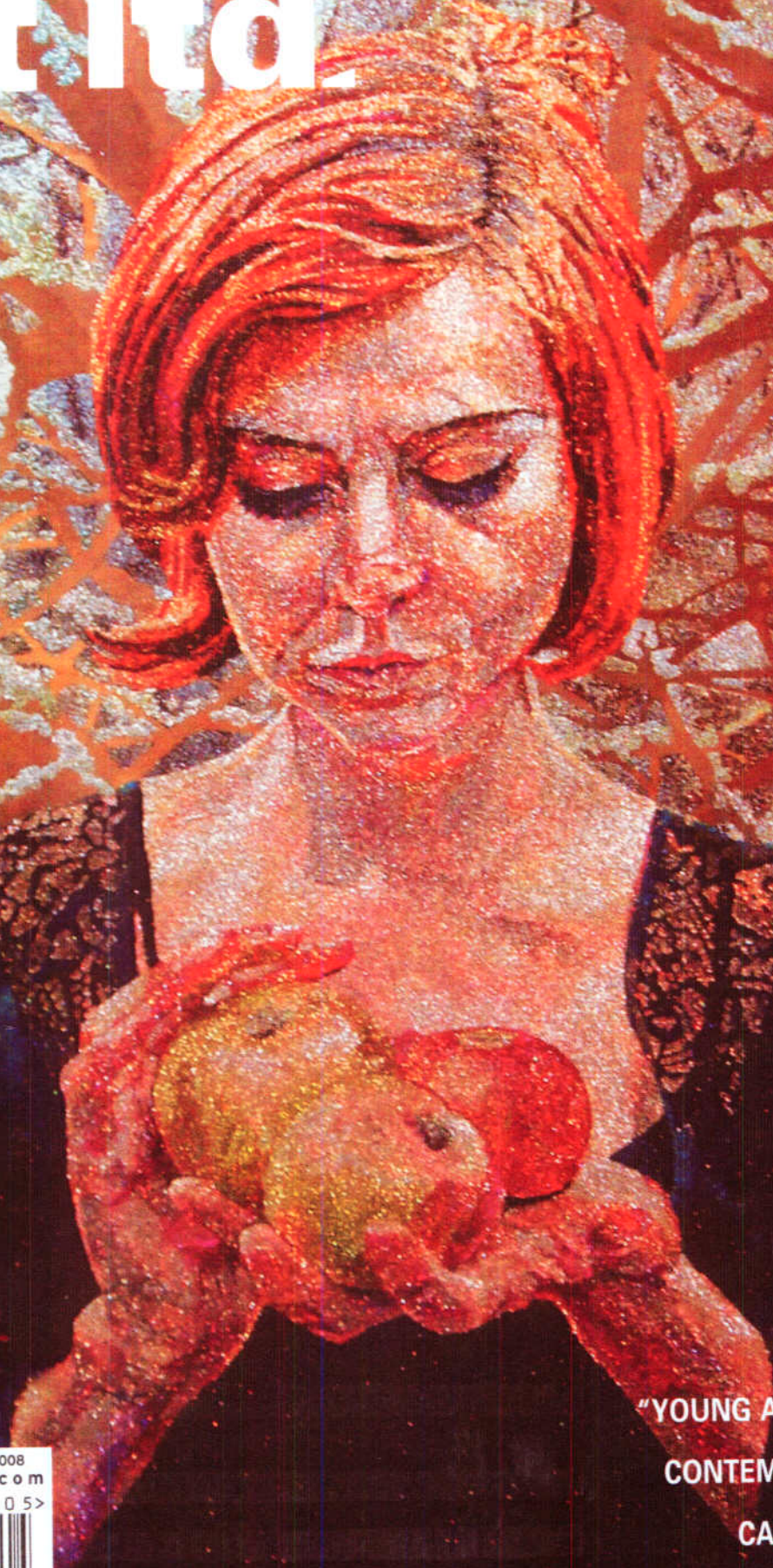


art ltd.



"YOUNG AT ART" 15 UNDER 35
CONTEMPORARY GLASS ART
CALIFORNIA VIDEO ART
ZERO ONE SAN JOSE

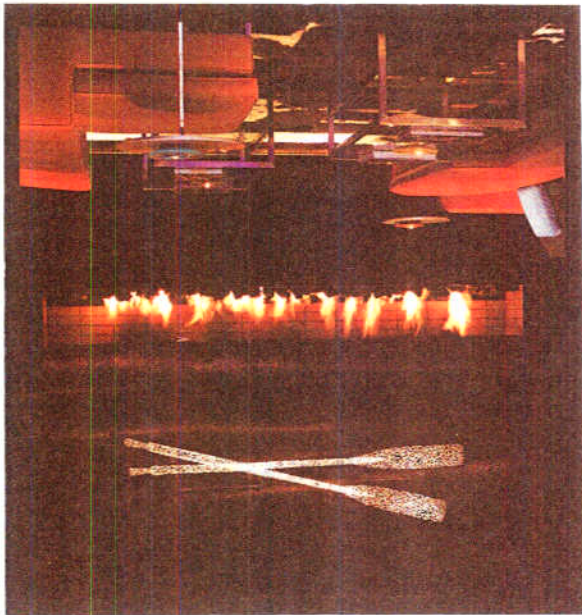
U.S. \$5.99/CAN \$6.99 May 2008
www.artltdmag.com



PILLARS OF GLASS

A COMMUNITY OF FAR-FLUNG BUT CLOSE-KNIT ARTISTS IS LEADING A GLASS RENAISSANCE IN THE PACIFIC NORTHWEST.

BY RICHARD SPEER



Tacoma draws its pilgrims

Many of Moje's students have been featured in exhibitions at the Museum of Glass in Tacoma, with its 13,000 square feet of exhibition space and its distinctive architectural signature, a whimsically tilted steel tower that climbs 90 feet into the air. The Museum is also home to the Chihuly Bridge of Glass, a colorful, art-lined overpass spanning 500 feet, linking the Museum to downtown Tacoma. Both the bridge and the museum itself opened to the public in July 2002 and have become regional landmarks, attracting rank-and-file tourists as well as connoisseurs on glass-art pilgrimages.

Another Tacoma stop for these pilgrims is both a place of lodging and an attraction in its own right. The freshly operational Hotel Murano, owned by Portland-based Provenance Hotels, opened its tony doors with a gala celebration on

LaMonte, Cobi Cockburn, and Steve Klein, along with the ubiquitous Chihuly—the Murano's permanent collection was handpicked by curator Tessa Papas, whose aim was to create "a cohesive, balanced, truly international collection, with all threads leading back, directly or indirectly, to the island of Murano." Papas says she was "particularly excited by the work of younger artists who aren't awed by the 'beauty' aspect of glass, but instead use it as just another medium to express their ideas."