

Condé Nast Traveler

SEVEN WINNING
TRAVEL APPS

TRUTH IN TRAVEL

JANUARY 2011

20-PAGE
SPECIAL

GOLD LIST WORLD'S BEST

504

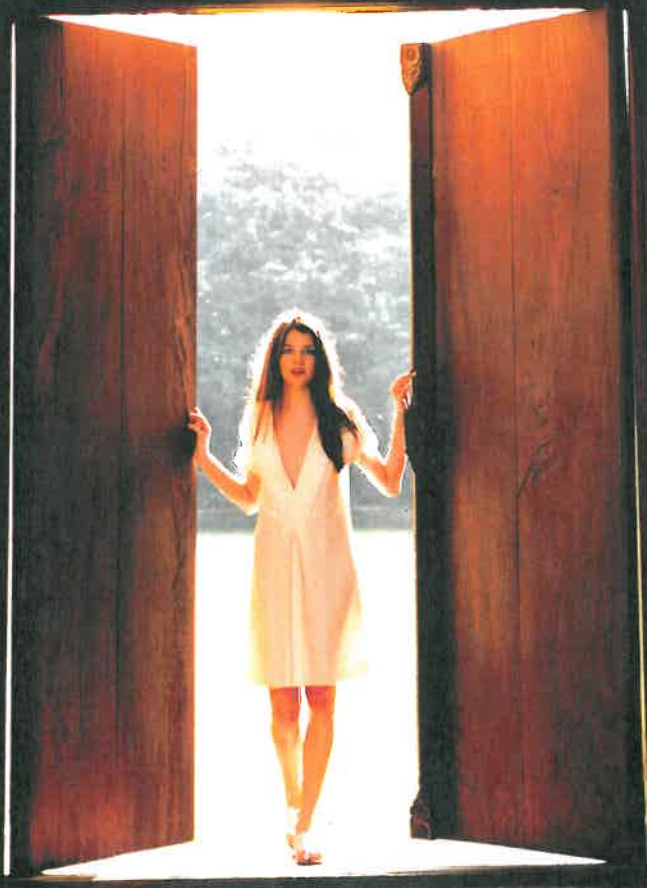
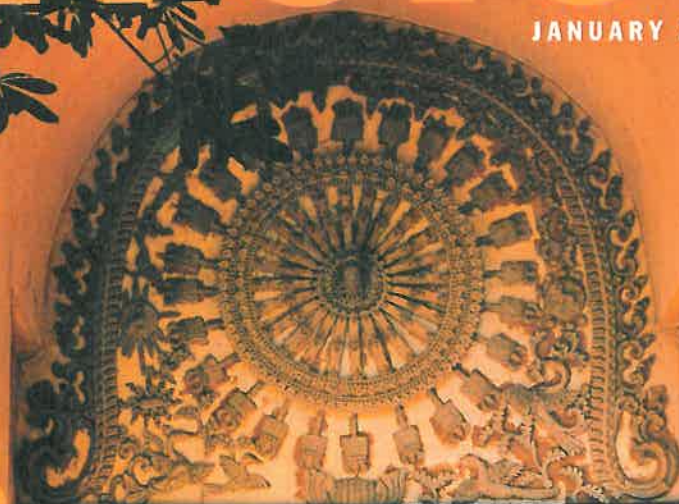
HOTELS,
RESORTS,
CRUISE LINES

PLUS

*EUROPE'S
RISING STAR*

*SOUTH
AMERICA'S
SECRET
PARADISE*

*INDIA'S
MAGIC CITY*



NORTH CAROLINA

- Inn on Biltmore Estate, Asheville 92.7**
 94.2 93.6 89.1 93.7 93.0
- Sanderling Resort & Spa, Duck 88.2**
 90.2 92.0 82.4 90.2 88.2 86.0
- Ferrington House Country Inn & Restaurant, Pittsboro 94.4**
 100 94.4 96.3 87.0 94.4

OREGON

- Stephanie Inn, Cannon Beach 94.4**
 94.3 95.0 92.0 99.3 91.3
- Tu Tu' Tun Lodge, Gold Beach 91.8**
 90.5 88.1 89.7 95.2 95.2

PENNSYLVANIA

- Four Seasons, Philadelphia 89.4**
 91.2 91.2 89.1 87.1 88.3

RHODE ISLAND

- Castle Hill Inn, Newport 87.7**
 86.4 85.9 86.7 91.9 87.4
- The Chanler at Cliff Walk, Newport 94.5**
 92.6 94.4 92.7 98.2 95.4

SOUTH CAROLINA

- ♀ Inn at Palmetto Bluff, Bluffton 88.5**
 95.0 88.0 79.6 85.8 93.0 89.4
- Charleston Place, Charleston 92.2**
 88.6 92.2 91.2 97.2 91.6

- French Quarter Inn, Charleston 88.7**
 87.4 89.0 82.9 92.9 91.2
- Planters Inn, Charleston 88.7**
 85.4 88.9 89.0 93.9 86.1

- Sanctuary at Kiawah Island Golf Resort, Kiawah Island 95.6**
 98.0 95.7 92.3 95.2 96.2 95.6

TENNESSEE

- Blackberry Farm, Walland 92.1**
 92.5 92.6 95.8 91.4 90.1

TEXAS

- Lake Austin Spa Resort, Austin 90.8**
 88.2 91.0 95.5 88.1 89.4 92.5
- Rosewood Crescent Hotel, Dallas 94.2**
 93.8 95.0 96.2 93.7 92.5
- Rosewood Mansion on Turtle Creek, Dallas 93.6**
 93.0 97.3 97.3 87.7 92.4

NEW Hotel Sorella Citycentre, Houston 93.1
 96.2 93.3 92.0 86.8 97.2

In the mixed-use Citycentre development, this "modern and borderline-hip hotel" opened a little over a year ago. "Very comfortable rooms" with European decor have dark hardwood floors, black glass table lamps, upholstered headboards, and chaise sofas and ottomans in aubergine velvet. Dine on rainbow trout pecandine or pomegranate molasses-lacquered duck at Bistro Alex. Monnalisa Bar has a central fireplace and a starlit ceiling. The rooftop infinity pool comes with loungers, custom lanterns, and draped cabanas. "Staff are definitely helpful and friendly."

- Mokara Hotel & Spa (formerly Watermark Hotel & Spa), San Antonio 91.8**
 92.5 89.5 89.9 95.5 91.7

2011 GOLD LIST

KEY TO SYMBOLS

- Rooms
- Service
- Food
- Location
- Design
- Activities

SCORES IN RED = OVERALL

NEW To Gold List

- ♀ Condé Nast Traveler 2010 Best Golf Resorts
- * Condé Nast Traveler 2010 Best Ski Resorts

For full reviews of every hotel and resort on the 2011 Gold List, with reader quotes, go to cntraveler.com/goldlist. (Or download our soon-to-be-released iPhone or iPad app: Condé Nast Traveler's 2011 Gold List.)



Dine en plein air at Rutherford, California's Auberge du Soleil. Luckily, the food, which scores 95.6, lives up to the Napa Valley vistas.

UTAH

- * Stein Eriksen Lodge, Park City 90.0**
 88.5 90.8 90.8 93.8 88.5 87.4

VERMONT

- NEW Stowe Mountain Lodge, Stowe 93.4**
 94.7 91.2 90.2 94.7 93.0 96.4
- The alpine ski lodge has "a really beautiful facade" of woven timber and shingles, with a stone veneer from local quarries, and there are fire pits scattered throughout the grounds. Bamboo bed linens, goose down duvets, and views of Mount Mansfield and Spruce Peak through picture windows enhance the rooms in whites and browns. Solstice's menu leans toward regional fare: Maine lobster, Vermont lamb. After a day schussing, get "a revitalizing sports massage" at the spa.

- * Pitcher Inn, Warren 89.2**
 93.8 88.2 37.9 88.2 88.2

VIRGINIA

- Keswick Hall, Charlottesville 95.6**
 91.3 95.7 97.8 96.7 100 93.3

- Inn at Little Washington, Washington 88.5**
 93.2 93.3 94.7 68.4 93.3

WASHINGTON

- Fairmont Olympic Hotel, Seattle 89.5**
 87.3 90.1 84.4 95.9 89.8

- Four Seasons, Seattle 87.9**
 86.7 89.8 83.5 89.8 89.8

- NEW Hotel 1000, Seattle 92.1**
 93.7 92.0 87.6 93.7 93.7
- "Cosmopolitan and hip," this newcomer is two blocks from the Seattle Art Museum and Pioneer Square. The lobby's frosted glass staircase and steel sculptures are softened by natural materials and organic

dyed textiles. Rooms are done in deep cherrywood and brushed silver; peer out over the city from the pedestal tub, which fills from the ceiling. "Seattle folks hanging out at the bar give it a lively vibe," while Boka serves whimsical, and mostly organic, Pacific Northwest fare like sweet-and-sour lamb "lollipops."

- Inn at the Market, Seattle 89.4**
 86.8 87.8 83.6 98.1 89.5

- Salish Lodge & Spa, Snoqualmie 88.2**
 87.2 87.9 86.8 91.1 87.8

- Hotel Murano, Tacoma 93.8**
 98.0 91.7 85.1 95.8 97.9

- NEW Tulalip Resort Casino, Tulalip 88.1**
 100 97.0 61.3 78.8 87.9 83.3

This former bingo hall established by the Tulalip Tribes in the 1980s is today a casino resort 45 minutes north of Seattle, replete with Tulalip carvings, weaving, and artwork. Perfect-scoring rooms—decorated in chocolate brown, sage green, and red—are "contemporary with tribal touches, very open and relaxing," and have "to-die-for showers with jets you can adjust to aim at all parts of your body." Blackfish Wild Salmon Grill & Bar serves dishes prepared using traditional Native American cooking methods, hence the salmon on a stick.

WEST VIRGINIA

- ♀ The Greenbrier, White Sulphur Springs 87.8**
 86.8 90.6 87.7 82.2 89.4 90.4

WYOMING

- * Amangani, Jackson Hole 93.6**
 96.6 93.1 86.2 93.1 100 92.9
- * Four Seasons, Jackson Hole 90.7**
 95.2 91.9 85.4 91.1 39.5 91.0